

# 2006 Fantasy Yachts Houseboat

**Boat Manufacturer:** Fantasy Yachts

**Year:** 2006

**Model:** 20' x 102'

**General Description:** Custom Aluminum Houseboat

**Hull ID#:** FJM00039F506

**LOA:** 102 | **Beam:** 20 | **Draft:** 3.5

**Hull Type:** Semi vee

**Hull Material:** Sheet welded aluminum

**Deck Material:** Sheet welded aluminum with carpet

**Rails:** Tube welded aluminum

**Number of Cabins:** 4

**Roof Material:** Fiberglass and gel-coated wood panels

**Roof Damage:** Minor delamination is present in gelcoat at top of aft steps

**Ventilation System Type:** Electrical blower

## HELM

**Steering System Type:** Sea Star hydraulic

**Controls Brand & Type:** ZF Mather Micro Commanders

**Gauge Brand:** Faria gauge set

**Switches:** Rocker switches

**Thruster Brand & Type:** Side Power Hydraulic Bow & Stern

**VHF Radio Brand & Model:** ICOM IC-M302

**Depth Finder Brand & Model:** Lowrance 3500 digital

**Camera Brand & Model:** Voyager camera system

**Spotlight Brand & Model:** Golight Radio Ray

## BRIDGE

**Steering System Type:** Sea Star hydraulic

**Controls Brand & Type:** ZF Mather Micro Commanders

**Gauge Brand:** Faria gauge set

**Switches:** Rocker switches

**Thruster Brand & Type:** Side Power Hydraulic Bow & Stern

**VHF Radio Brand & Model:** ICOM IC-M302

**Depth Finder Brand & Model:** Lowrance 3500 digital

## APPLIANCES

**Stove Brand & Model:** GE Café five burner with oven

**Refrigerator Brand:** GE double door

**Ice Maker Brand:** GE

**Trash Compactor Brand:** GE

**Dishwasher Brand:** GE Café

**Microwave Brand:** GE Café

**Sink Type:** Stainless Steel with garbage disposal

## 2006 Fantasy Yachts Houseboat

**Plumbing Material:** PVC & PEX water line

**Cabinets:** Custom wood cabinets

**Washer/Dryer Brand & Model:** GE

### GENERATOR

**Generator Brand:** Westerbeake | **Model:** 25.0 BEGA | **Year:** 2005

**Generator Serial #:** 730861-E507 | **Fuel Type:** Gasoline | **Hours:** 1269.4 | **Cylinders:** Four

**Exhaust System Hose Size:** 3" Marine wet exhaust

**Generator Battery Brand:** Optima

**Cooling System Type:** Water cooled

### ENGINE

**Engine Brand:** Mercruiser | **Engine Type:** Inboard/Outboard

**Engine Model(s):** 5.0 MPI | **Mfg. Year:** 2006 | **Number of Engines:** 2

**Engine Serial #(s) - Port:** OW363802 | **Starboard:** OW363798

**Engine Hours - Port:** 273.5 | **Starboard:** 276.7

**Engine Drive(s) - Brand:** Mercruiser | **Model:** Bravo

**Propeller Material:** Aluminum

**Engine Cylinders:** Eight each | **Horsepower:** 260 each

**Fuel Type:** Gasoline

**Engine Batteries Brand:** Deka & Optima

### FUEL TANKS (2)

**Fuel Tank Material:** Aluminum | **Brand:** RDS | **Capacity:** 164 gallon each

### BATHROOMS

**Number of Heads:** 4 | **Toilet Brand(s):** Tecma | **Toilet Model(s):** Silence Plus

**Shower or Bath Type:** Custom tile shower

**Waste Tank Material:** Poly | **Number of Waste Tanks:** One

**Piping Material:** PVC Piping

**Hose Type:** Marine sanitation

**Waste Tank Capacity:** Est. 80 gallon

**Fresh Water Tank(s) - Number:** Four | **Tank Material:** Poly

**Tank Capacity:** Est. 100 gallon each

**Water System Piping Material:** PEX & PVC

**Hot Water Heater Brand:** US/Craftmaster | **Model:** E1F20US015V | **Capacity:** 19 gal.

**Hot Water Heater Type:** Electric

**Heating & Cooling System Type:** Geothermal Heating and Air Conditioning system

**Unit Brand:** FHP Manufacturing | **Model:** GT048-1HZN

**Bridge Top Frame Material:** Aluminum frame

**Bridge Top Cover Material:** Fiberglass & gelcoat

**Party Top Frame Material:** Aluminum frame

**Party Top Cover Material:** Fiberglass & gelcoat

**Wet Bar Material:** Fiberglass & gelcoat

## 2006 Fantasy Yachts Houseboat

**Wet Bar Appliances:** GE ice maker, trash compactor and refrigerator

**PWC Ramps Present:** YES | **Material:** Aluminum in storage

**PWC Fueling Station:** Aft deck

(7) TVs

(1) DVD Player

**Entertainment System Brand:** Yamaha

**Entertainment System Description:** Tuner and surround sound system

**LP Gas Cylinders Amount:** 1 | **Location:** Wet bar

### MISC. EQUIPMENT

Pull down sunshades installed on roof deck.

Custom hydraulic swim deck.

Dumb waiter in galley.

Central vacuum system installed.

Tracvision satellite receiver on roof deck.

### RECOMMENDATIONS OR DAMAGE FOR REPAIR LISTED BELOW:

**\*NOTE:** All recommendations reference USCG, NFPA, or ABYC Standards.

\*Carbon monoxide detectors were not operating normally. Carbon monoxide detection shall be provided in accordance with ABYC A-24. NFPA 302.12.2.

\*No smoke detector was installed. All vessels over 26 ft. or more in length with accommodation spaces for sleeping shall have a single station smoke detector that is listed to UL217. NFPA 302.12.3

\*Proper amount of fire extinguishers was not found on board. Vessel 100 to less than 300 tons shall have the following extinguishers: 1-4A:60B:C outside machinery space; 3-4A:60B:C, one at helmsman's position, galley, and crew quarters; 1-1A:10B:C at cabin. NFPA 302.12.1.2.2.

\*Batteries were not mounted properly. Batteries shall be mounted securely and shall not move more than 1" in any direction and terminals shall be covered to prevent metallic objects contacting battery terminals. ABYC E-10.

\*Propane tanks on board were not mounted to standards and a tank was found not properly stored. LPG Cylinders, cylinder valves, regulating equipment, and safety devices shall be readily accessible secured for sea conditions, and protected from the weather and against mechanical damage, and shall be installed in a ventilated location on the exterior of the boat where escaping gases will flow directly overboard. ABYC A-1 standard.

\*Floor in head on roof deck was damaged and has broken through. See photos.

\*All stereo speakers on roof deck are missing. See photos.

\*Some delamination and cracking in gelcoat is present in roof at the top of the aft stairs.

\*Gelcoat is flaking off of side wall on aft deck steps.

\*Canvas on bow deck is torn and hanging down.

\*Marine radio on fly bridge was not working normally.

\*Air compressor for air horn would not turn on when breaker was turned on for it.

\*Invertor was not on and did not appear to be working. Invertor batteries were 7 years old and possibly bad.

\*Automatic bilge pump switch did not turn on aft bilge pump. Batteries possibly dead.

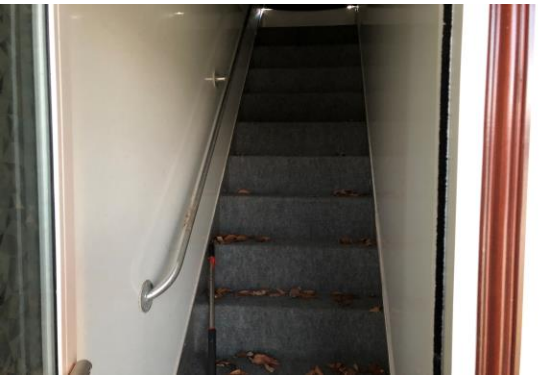
\*Remote control spotlight is not working. Remote control batteries possible dead. Appeared good. \*Stovetop burners on GE stove would not come on. Oven is operating normally.

2006 Fantasy Yachts Houseboat





2006 Fantasy Yachts Houseboat



2006 Fantasy Yachts Houseboat





2006 Fantasy Yachts Houseboat

